

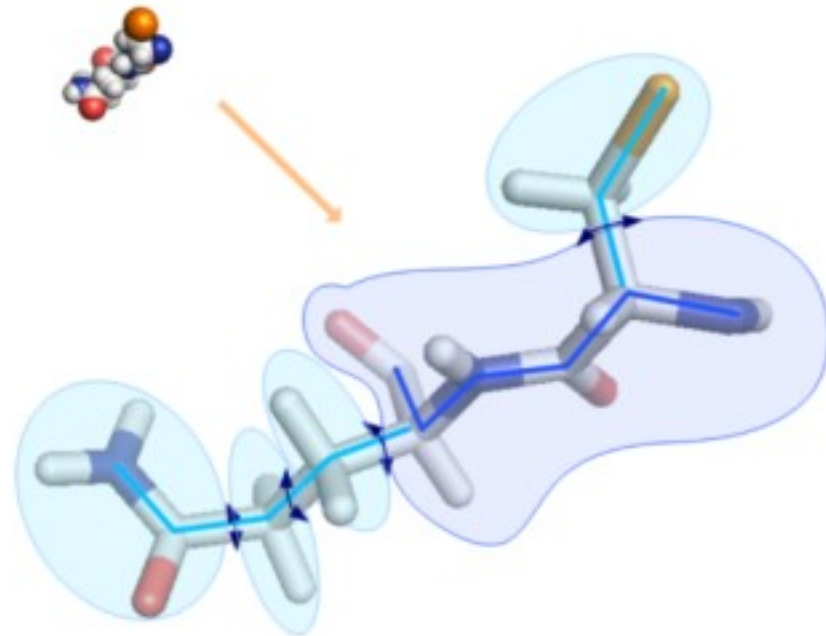
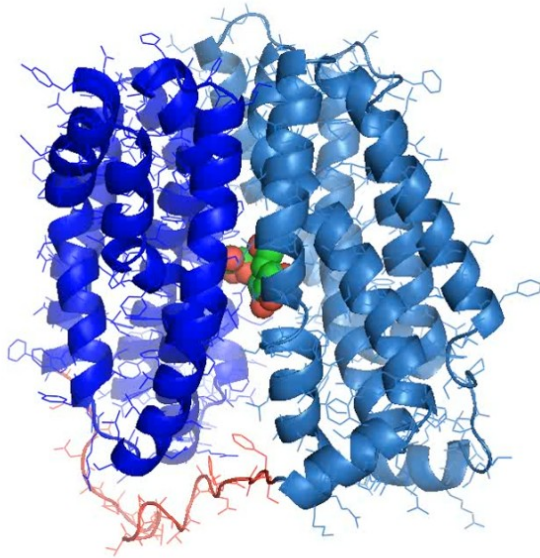
La plateforme web **MoMA**

Un serveur applicatif pour la bio
Marc Vaisset
20/06/2019

Molecular Motion Algorithms

- Des méthodes issues de la robotique
 - ◆ Exploration stochastique de l'espace des conformations
 - ◆ Un robot manipulateur : 6 degrés de liberté
 - ◆ Appliquées à l'étude des protéines/peptides
 - ◆ Un peptide : des centaines de degrés de liberté

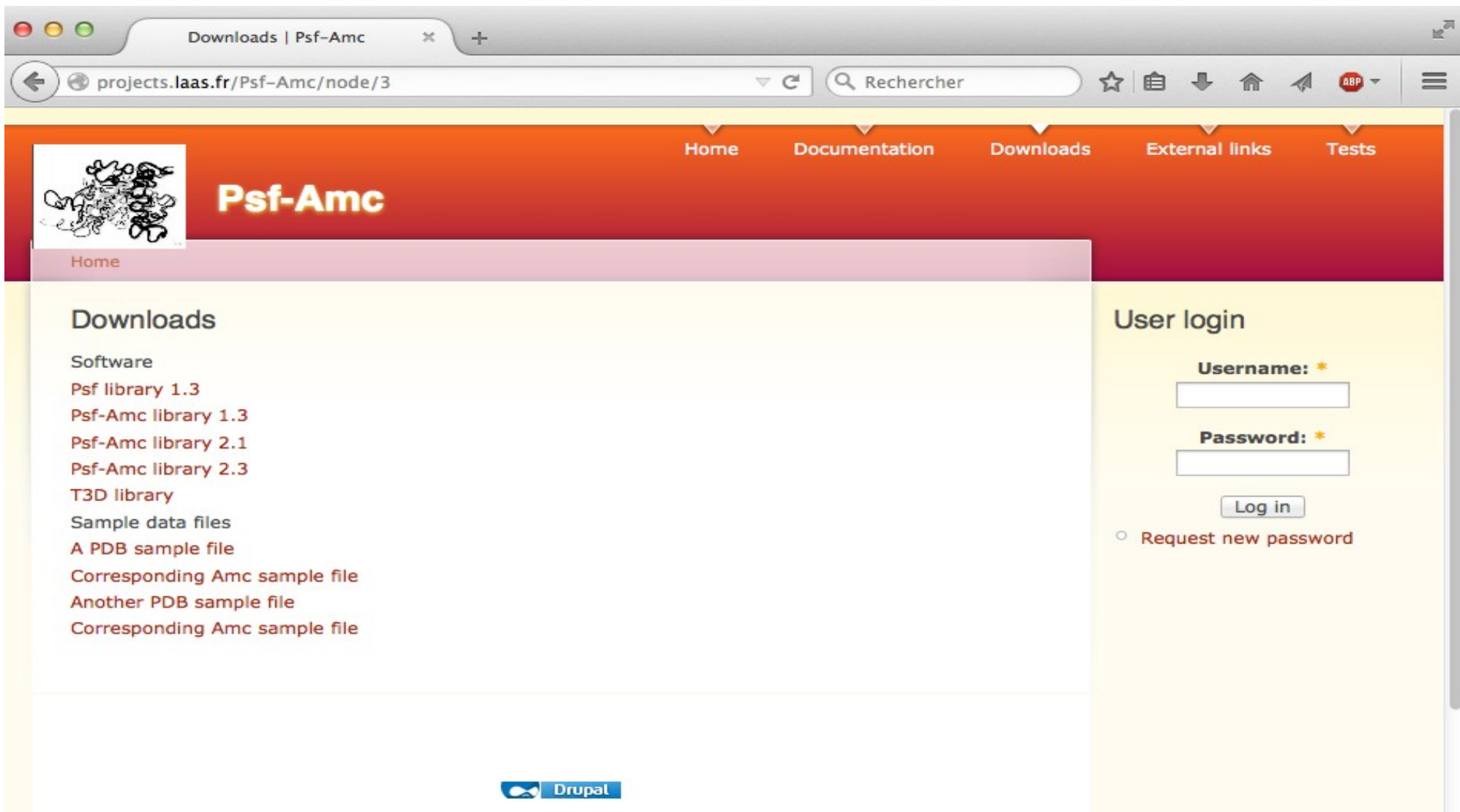
Les protéines sont des chaînes articulées



Diffusion des applications

- Premier essai : Open Source
 - Un site web informatif
 - Mise à disposition du logiciel sous forme classique

Diffusion, premier essai




Downloads | Psf-Amc

projects.laas.fr/Psf-Amc/node/3

Rechercher

Home Documentation Downloads External links Tests

 **Psf-Amc**

Home

Downloads

Software

- Psf library 1.3
- Psf-Amc library 1.3
- Psf-Amc library 2.1
- Psf-Amc library 2.3
- T3D library

Sample data files


- A PDB sample file
- Corresponding Amc sample file
- Another PDB sample file
- Corresponding Amc sample file

User login

Username: *

Password: *

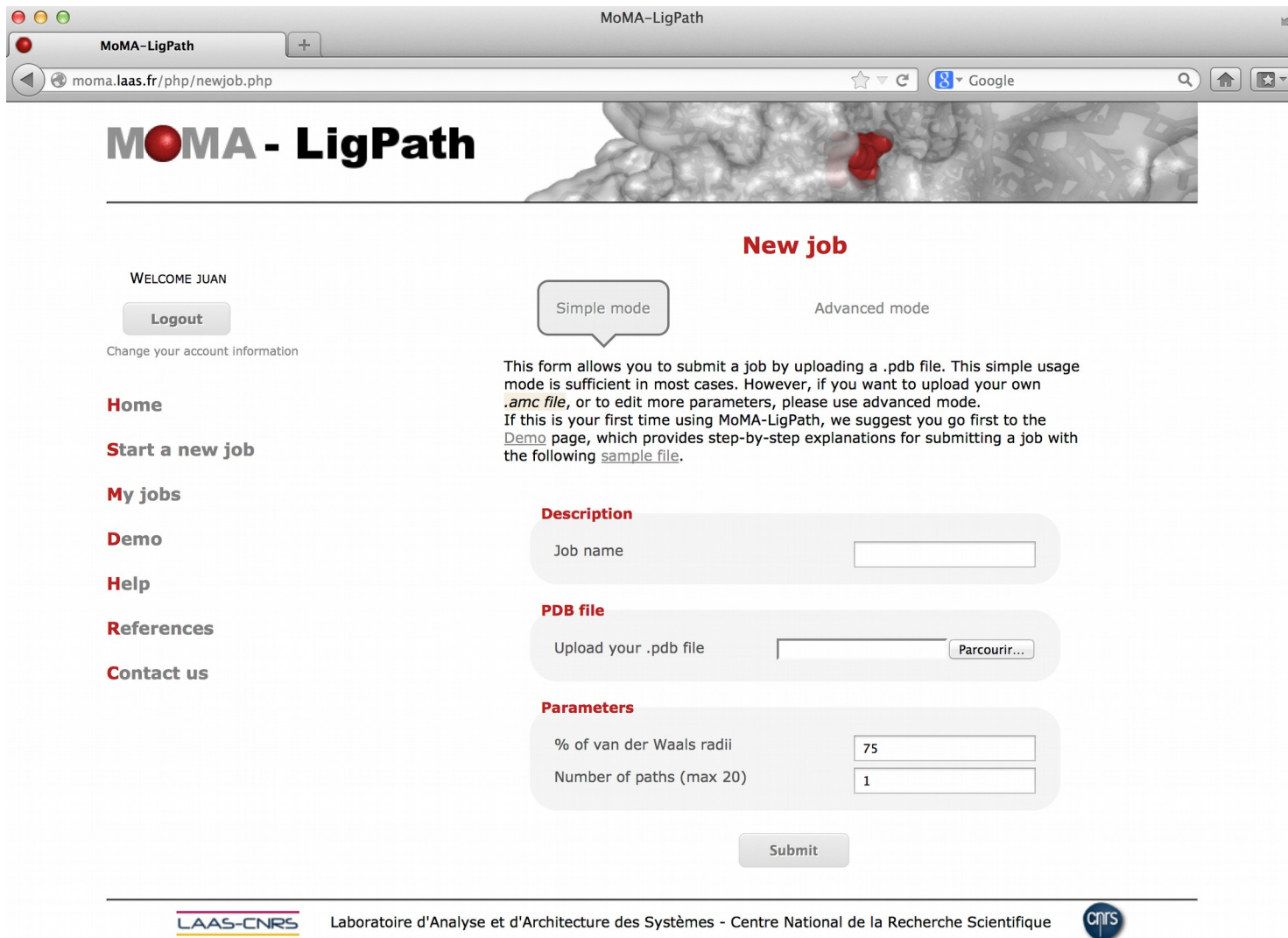
Request new password

 Drupal

Diffusion des applications

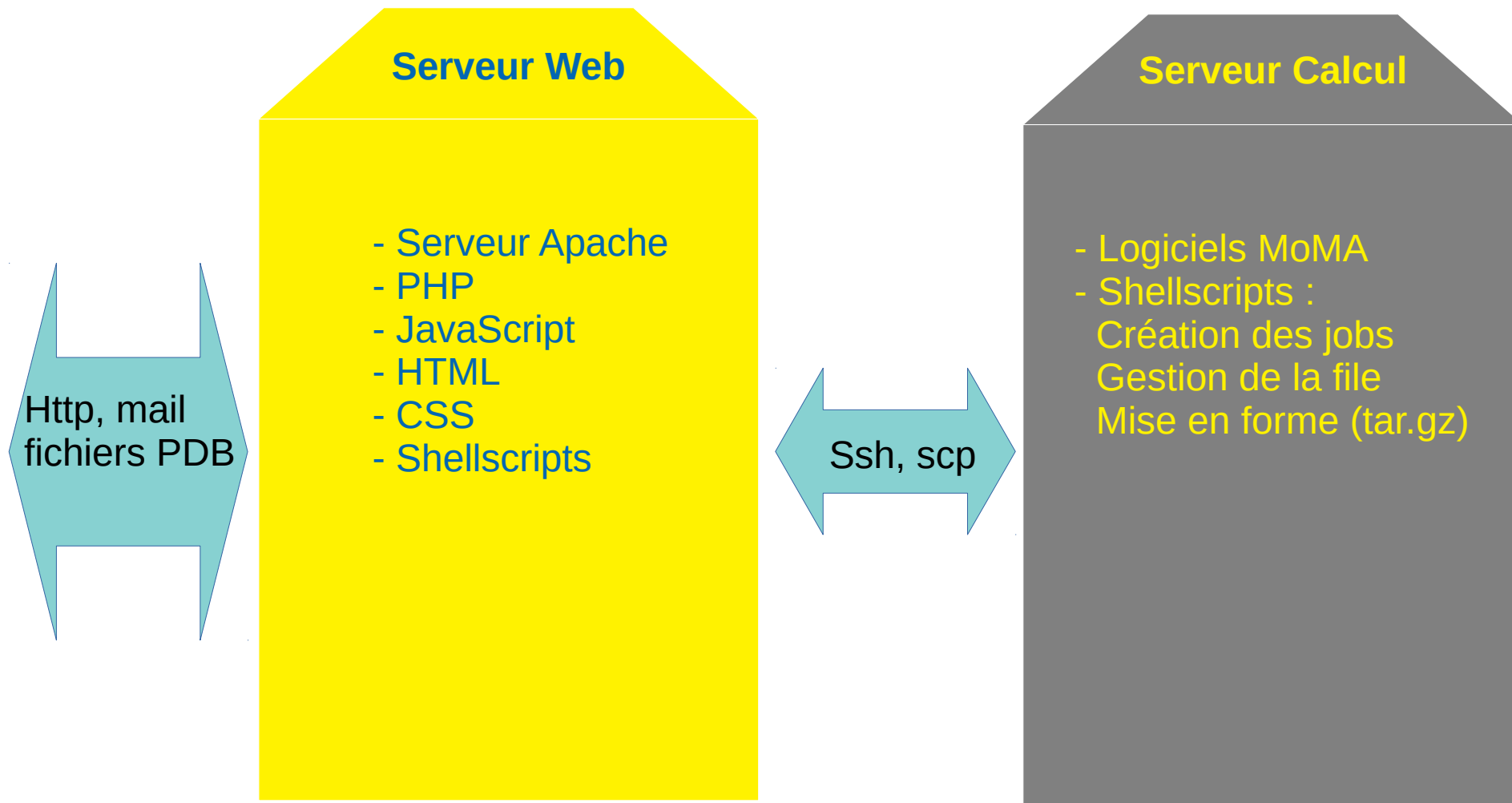
- Open Source
 - ◆ Raté ! Les biologistes ne suivent pas
 - ◆ Culture métier : peu de développeurs
- Deuxième essai : serveur applicatif
 - ◆ Installé et publié en 2013
 - ◆ Numéro spécial de la Revue NAR (Nucleic Acids Research)
 - ◆ Une application : MoMALigPath
 - Chemin de sortie d'un ligand

Diffusion, deuxième essai



The screenshot shows a web browser window titled "MoMA-LigPath" with the URL "moma.laas.fr/php/newjob.php". The page features a header with the "MoMA - LigPath" logo and a 3D molecular model. A "New job" section offers "Simple mode" and "Advanced mode" options. A sidebar on the left contains navigation links: "Home", "Start a new job", "My jobs", "Demo", "Help", "References", and "Contact us". The main content area includes a "Description" field for the job name, a "PDB file" upload section with a "Parcourir..." button, and a "Parameters" section with input fields for "% of van der Waals radii" (set to 75) and "Number of paths (max 20)" (set to 1). A "Submit" button is located at the bottom of the form.

Architecture et techniques utilisées



MoMA-Web 2

- ▶ Nouvelle version en gestation
- ▶ Multi-applications
 - LoopSampler
 - IDPSampler
- ▶ Techniques actuelles (à la mode?)
 - Django ? Node.js ? pour l'interface
 - Même architecture globale

That's all folks